



**Set 1 Tracks 1 to 8**

**Name That Song Quiz**

**May 2018**

**Question 1: Track 1**

-----

Clue 1 - Fats Waller's friend delivers milk  
Clue 2 - His friend also gives him advice  
Clue 3 - A good friend who gives good advice!  
Clue 4 - M\_ V\_ry G\_\_d Fr\_\_\_d The  
Mi\_\_m\_n

**Question 2: Track 2**

-----

Clue 1 - Woof woof  
Clue 2 - Another hit for the "King"  
Clue 3 - Both words are a 4 legged animal that barks  
Clue 4 - Hou\_\_ D\_\_

**Question 3: Track 3**

-----

Clue 1 - Gracie Fields had one  
Clue 2 - It was in a pot in her living room  
Clue 3 - It was the biggest one ever  
Clue 4 -The b\_\_est As\_\_d\_\_tr\_ in the  
w\_\_d

**Question 4: Track 4**

-----

Clue 1 - Do you or don't you belong to me?  
Clue 2 - Mostly slang words  
Clue 3 - Last word: a tiny child  
Clue 4 - I\_ Y\_\_ I\_ , O\_ I\_ Y\_\_ A\_n't M\_  
B\_b\_

**Question 5: Track 5**

-----

Clue 1 - Something I will write one day  
Clue 2 - My autobiography  
Clue 3 - Last word rhymes with 'wife'  
Clue 4 - T\_\_ S\_\_r\_ O\_ M\_ L\_\_e

**Question 6: Track 6**

-----

Clue 1 - A famous Welsh song  
Clue 2 - Time for sleeping  
Clue 3 - All of this time  
Clue 4 - A\_\_ Thr\_\_h The N\_\_t

**Question 7: Track 7**

-----

Clue 1 - Remembering you  
Clue 2 - Good memory  
Clue 3 - He just won't  
Clue 4 - I Wo\_\_t For\_\_\_ Y\_\_

**Question 8: Track 8**

-----

Clue 1 - 1st word: seen in the sky at night  
Clue 2 - It changes throughout the month  
Clue 3 - 2nd word: water that flows to the sea  
Clue 4 - M\_\_n R\_\_er

**Answers:**

Smile

Q2: Hound Dog  
Q4: Is You Is Or Is You Ain't My Baby  
Q6: All Through The Night  
Q8: Moon River

Q1: My Very Good Friend The Milkman  
Q3: Biggest Aspidistra In The World  
Q5: The Story Of My Life  
Q7: I Won't Forget You



**Set 2 Tracks 9 to 16**

**Name That Song Quiz**

**May 2018**

**Question 1: Track 9**

-----

- Clue 1 - 3rd Word rhymes with tool
- Clue 2 - Frankie Lymon sang this
- Clue 3 - Its all about love
- Clue 4 - Wh\_ D\_ Foo\_\_ Fa\_\_ I\_ Lo\_\_

**Question 2: Track 10**

-----

- Clue 1 - Sung by Fred Astaire
- Clue 2 - Looking at the music!
- Clue 3 - Then we can dance
- Clue 4 - Le\_'s Fa\_\_ Th\_ Mus\_\_ An\_ Da\_\_

**Question 3: Track 11**

-----

- Clue 1 - From the film 'High Noon'
- Clue 2 - He is worried his girl will leave him
- Clue 3 - He is pleading with her not to go
- Clue 4 - D\_ N\_\_ F\_\_sa\_e M\_

**Question 4: Track 12**

-----

- Clue 1 - It may hang in a frame
- Clue 2 - Not me but Y...
- Clue 3 - We may have one of a loved one
- Clue 4 - APic\_\_\_\_\_ Of Y\_\_

**Question 5: Track 13**

-----

- Clue 1 - A Scottish love song
- Clue 2 - Wandering around
- Clue 3 - The first and last words rhyme
- Clue 4 - Roa\_\_\_g I\_ Th\_ Glo\_\_\_\_\_g

**Question 6: Track 14**

-----

- Clue 1 - A World War One song
- Clue 2 - The long and the short and the tall
- Clue 3 - A kind of prayer for them all
- Clue 4 - Bl\_ss ' \_m \_ll

**Question 7: Track 15**

-----

- Clue 1 - Sung by Al Jolson
- Clue 2 - Seven times he boarded the train
- Clue 3 - The sound a horn makes, twice!
- Clue 4 - T\_\_t, T\_\_t To\_\_ts\_e G\_\_db\_\_e

**Question 8: Track 16**

-----

- Clue 1 - What you do when asleep
- Clue 2 - Not a nightmare, and not big!
- Clue 3 - I hope I'll be in there a little bit
- Clue 4 - Dr\_\_\_\_ a Lit\_\_\_\_ Dr\_\_\_\_ of M\_\_

**Answers:**



- Q8: Dream A Little Dream Of Me
- Q6: Bless 'Em All
- Q4: A Picture Of You
- Q2: Let's Face The Music And Dance

- Q7: Toot Toot Tootsie Goodbye
- Q5: Roamin' In The Gloamin'
- Q3: Do Not Forsake Me
- Q1: Why Do Fools Fall In Love



**Set 3 Tracks 17 – 24**

**Name That Song Quiz**

**May 2018**

**Question 1: Track 17**

-----

- Clue 1 - To talk very quietly
- Clue 2 - It's green and it is our lawn!
- Clue 3 - It does this as it blows in the wind
- Clue 4 - Whisp\_\_\_\_\_ Gr\_\_\_\_

**Question 2: Track 18**

-----

- Clue 1 - Doris Day longs to see someone
- Clue 2 - She will have to fall asleep to do it
- Clue 3 - Last word - we say 'Sweet d.....!'
- Clue 4 - I\_ l S\_ Y\_ I\_ M\_ D\_ ms

**Question 3: Track 19**

-----

- Clue 1 - Sung by David Whitfield
- Clue 2 - Why must we say goodbye?
- Clue 3 - Italian for 'My Beloved'
- Clue 4 - C\_ \_ a M\_ \_

**Question 4: Track 20**

-----

- Clue 1 - This song asks a question
- Clue 2 - Say this when you shake hands
- Clue 3 - Last word: rhymes with 'sit'
- Clue 4 - H\_ \_ D\_ Y\_u D\_ I\_?

**Question 5: Track 21**

-----

- Clue 1 - An Irish folk song
- Clue 2 - Her hair is tied back with ribbon
- Clue 3 - It's made of very dark, soft material
- Clue 4 - Bl\_ \_k V\_ lv\_ t B\_ nd

**Question 6: Track 22**

-----

- Clue 1 - A song from the East End of London
- Clue 2 - A type of vehicle
- Clue 3 - 'But don't dilly dally on the way'
- Clue 4 - M\_ Ol\_ Ma\_ S\_ \_ Fo\_ \_ w  
T\_ \_ Va\_

**Question 7: Track 23**

-----

- Clue 1 - Somebody likes his booze!
- Clue 2 - Drinking glasses make this sound
- Clue 3 - Cheers!
- Clue 4 - Cl\_ \_k Cl\_ \_k An\_ ther Dr\_ \_k

**Question 8: Track 24**

-----

- Clue 1 - Written and composed by Bob Dylan
- Clue 2 - Last word: opposite of woman
- Clue 3 - A wooden instrument that jingles
- Clue 4 - M\_ Tamb\_ \_ \_ Ma\_

**Answers:**



- Q2: I'll See You In My Dreams
- Q4: How Do You Do It?
- Q6: My Old Man Said Follow The Van
- Q8: Mr Tambourine Man

- Q1: Whispersing Grass
- Q3: Cara Mia
- Q5: Black Velvet Band
- Q7: Clink, Clink Another Drink



**Set 4 Tracks 25 – 31 & 33 Name That Song Quiz May 2018**

**Question 1: Track 25**

-----

- Clue 1 – Sung by HMS Pinafore
- Clue 2 – A man of English decent
- Clue 3 – To his credit
- Clue 4 – F\_\_ H\_ I\_ A\_ En\_l\_s\_m\_\_

**Question 2: Track 26**

-----

- Clue 1 - Oh, it's a wonderful thing
- Clue 2 - That feeling in the heart
- Clue 3 - Lots of this splendid love
- Clue 4 - Lo\_\_ I\_ A Man\_ Spend\_\_\_\_\_ Th\_\_

**Question 3: Track 27**

-----

- Clue 1 - Going
- Clue 2 - Faster than walking
- Clue 3 - Getting out of there fast
- Clue 4 - Ru\_\_ w\_\_

**Question 4: Track 28**

-----

- Clue 1 – Sung by Cole Porter
- Clue 2 – Not the bottom
- Clue 3 – Thought of as the best
- Clue 4 – Y\_\_' e T\_\_ \_o\_

**Question 5: Track 29**

-----

- Clue 1 - The Andrews sisters sang this
- Clue 2 – Previous to this Glen Miller sang this and it featured in ‘Sun Valley Serenade’
- Clue 3 – The sound a train makes
- Clue 4 - Chattan\_\_\_\_\_ Ch\_\_ Ch\_\_

**Question 6: Track 30**

-----

- Clue 1 – The title of a TV Western series
- Clue 2 - When something isn't cooked it is r\_\_
- Clue 3 - The skin of a cow
- Clue 4 - R\_w\_\_de

**Question 7: Track 31**

-----

- Clue 1 - An old dance in three/four time
- Clue 2 - Usually danced at the end of a ball
- Clue 3 - 2nd word: rhymes with 'roaming'
- Clue 4 - T\_e Ho\_ing W\_\_tz

**Question 8: Track 33**

-----

- Clue 1 – Sung by Bing Crosby
- Clue 2 – Pet name for a loved one
- Clue 3 – Want to name someone
- Clue 4 – L\_\_ M\_ C\_\_ll \_\_ou Sw\_ et\_ ea\_t

Answers:



- Q2: Love Is A Many Splendored Thing
- Q4: You're The Top
- Q6: Rawhide
- Q8: Let Me Call You Sweetheart

- Q1: For He Is An Englishman
- Q3: Runaway
- Q5: Chattanooga Choo Choo
- Q7: The Homing Waltz

Golden Jubilee street party in Oxford

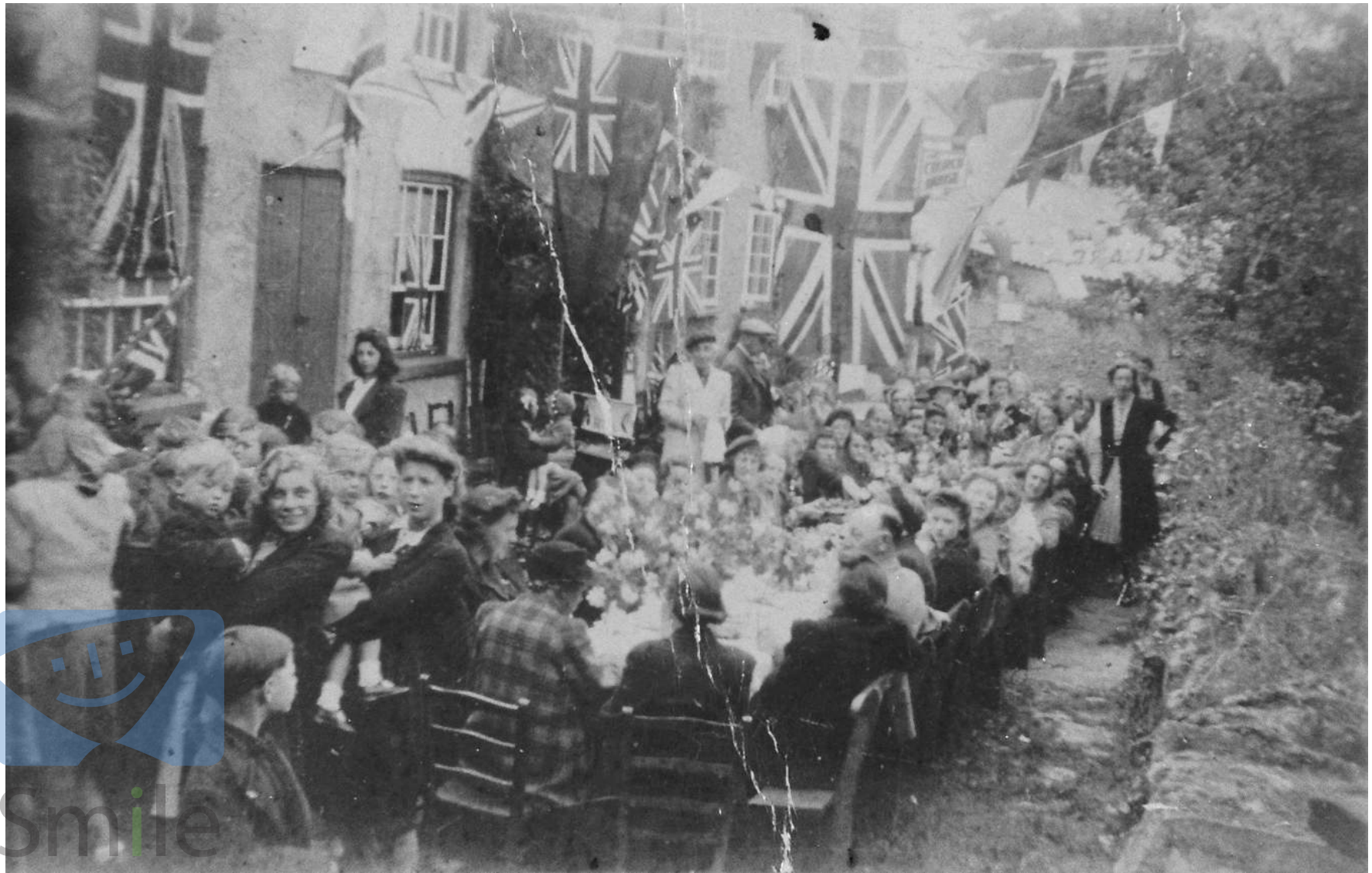


<http://bit.ly/2G3zost>

© 2018 Daily Sparkle™ from Everyday Miracles Ltd

Smile

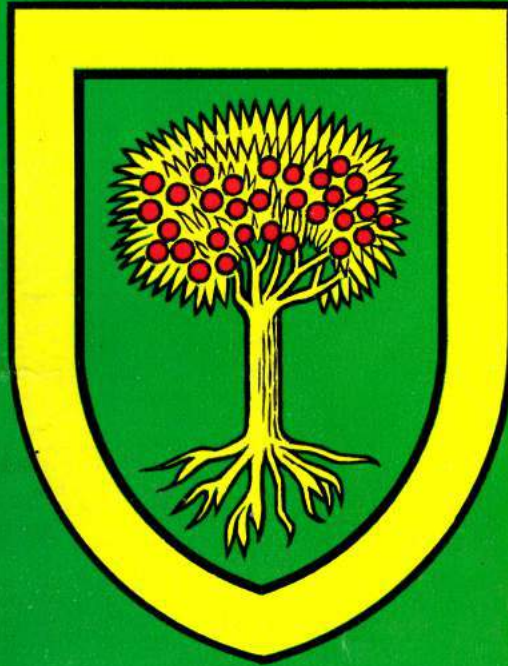
VE Day street party in a Devon village



Smile

Chelsea Flower Show Programme 1971

THE ROYAL HORTICULTURAL SOCIETY



chelsea

1971

15p

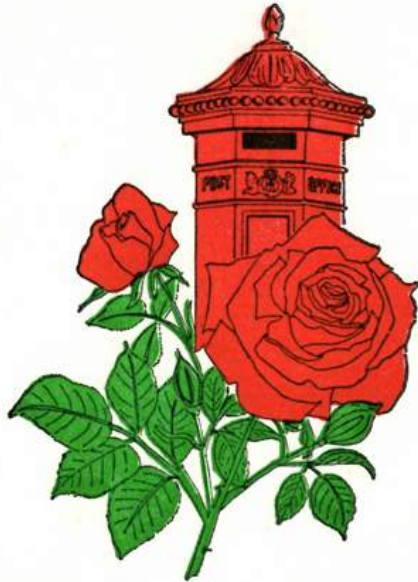


Smile

© 2018 Daily Sparkle™ from Everyday Miracles Ltd

Chelsea Flower Show souvenir envelope from 1987'

*Souvenir of your visit to the  
CHELSEA FLOWER SHOW*



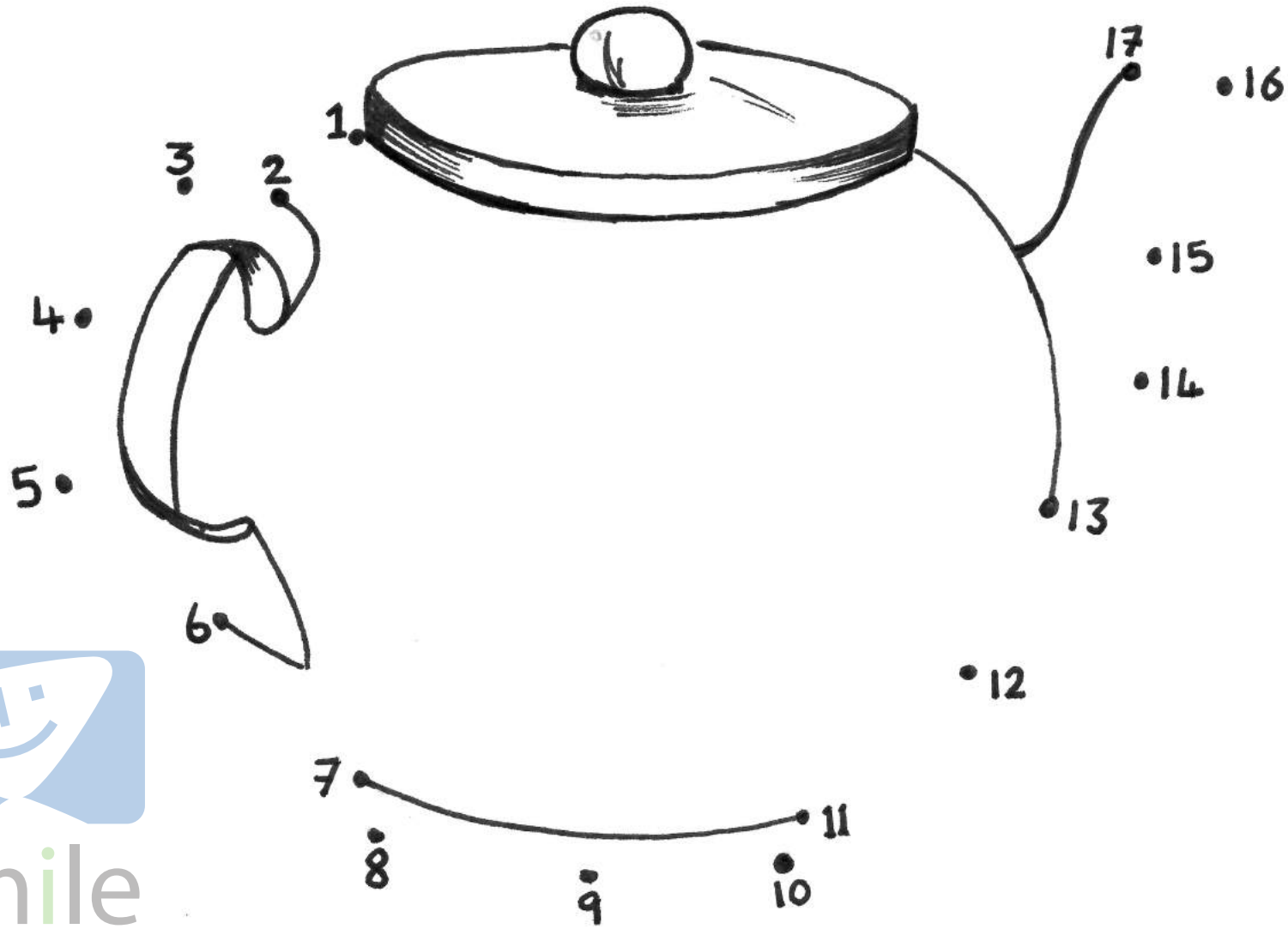
**19th to 22nd May 1987**

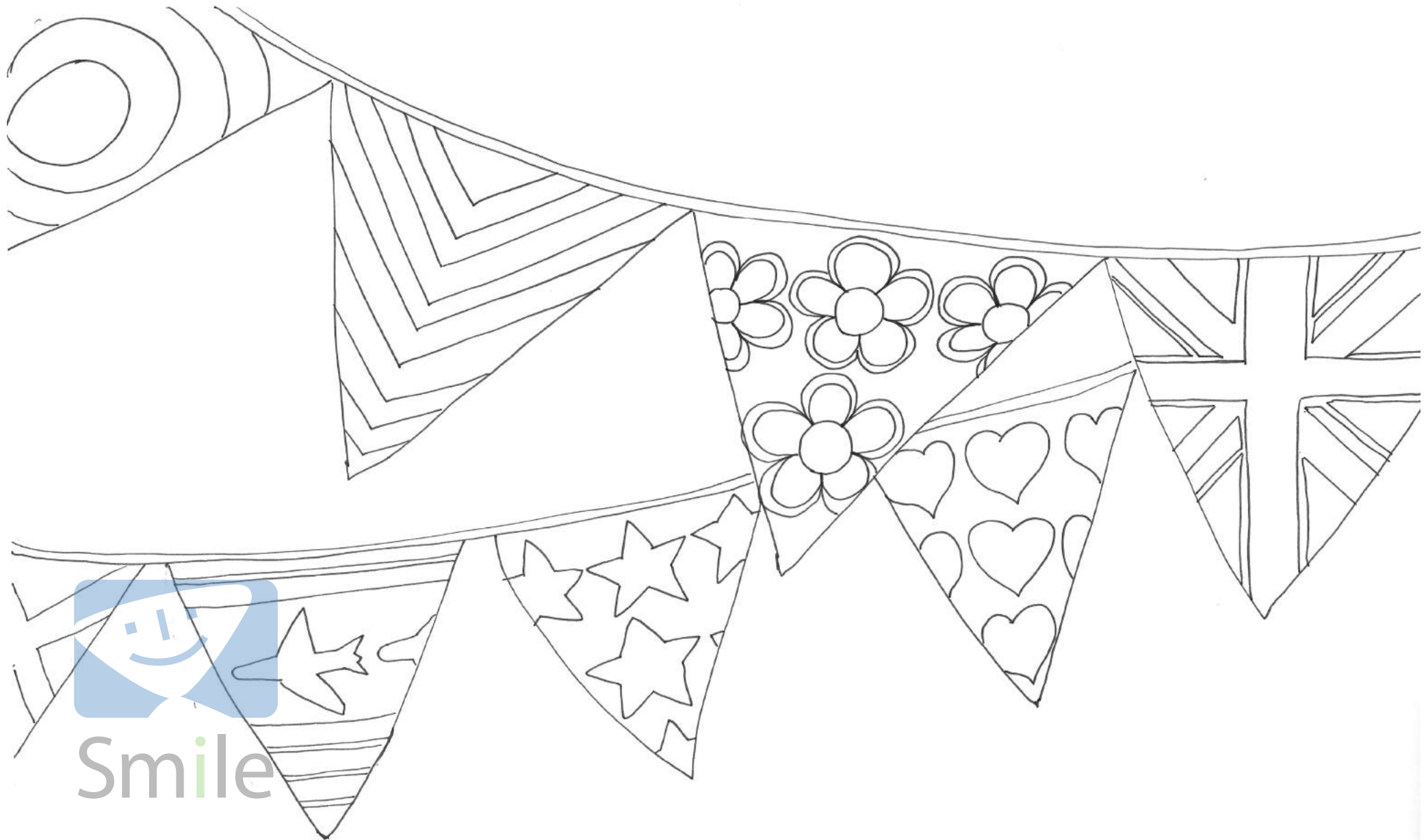
Mrs. S. Pulling  
109 Elm Rd  
Thetford  
NORFOLK

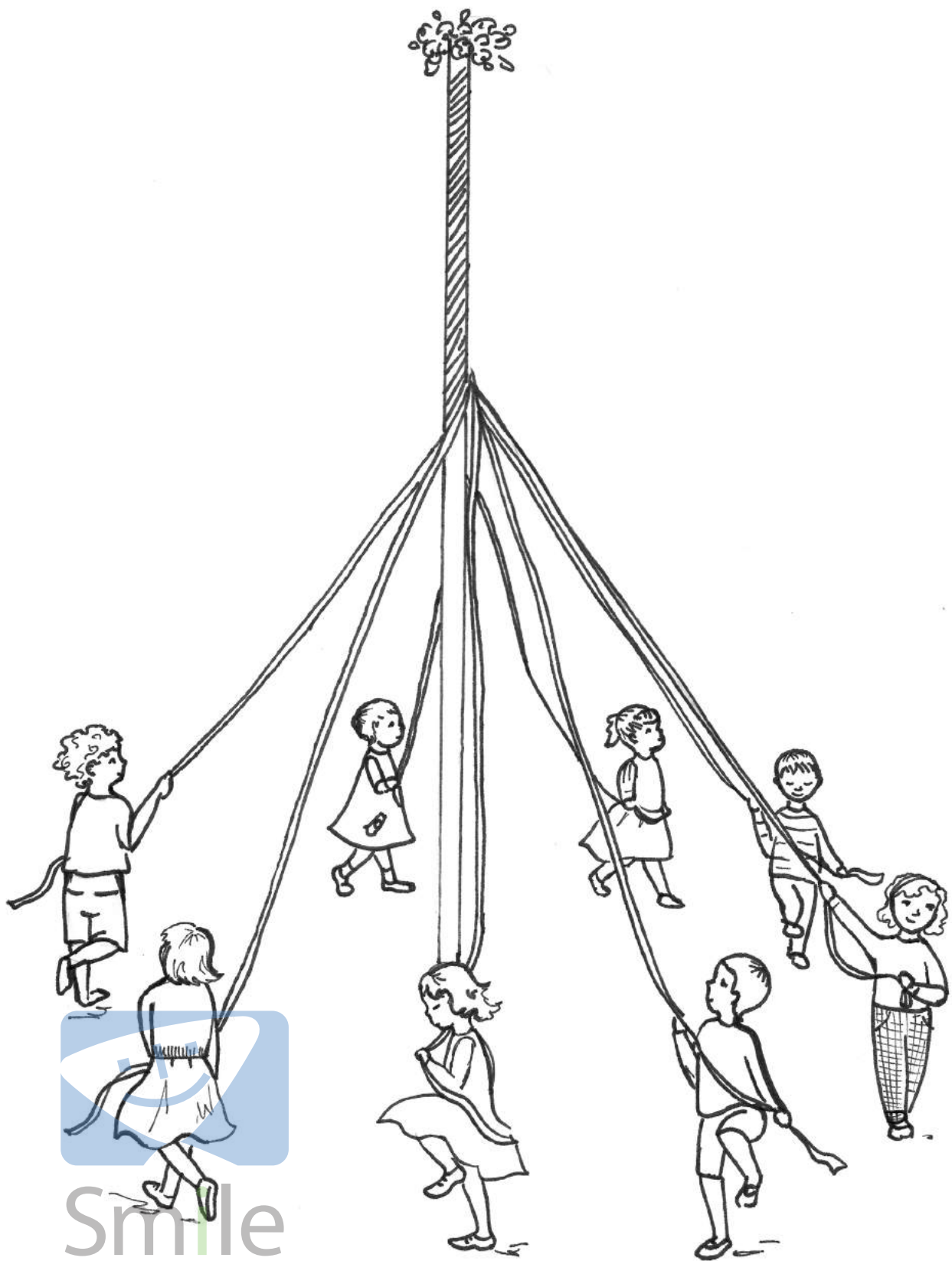


Smile











Smile

As bold as brass

Fit as a fiddle

Saved by the bell

Laughter is the best medicine

As clean as whistle

Steal someone's thunder

Hit the nail on the head



Straight from the horse's mouth

Smile